

## 2010 Report for EHP Australia

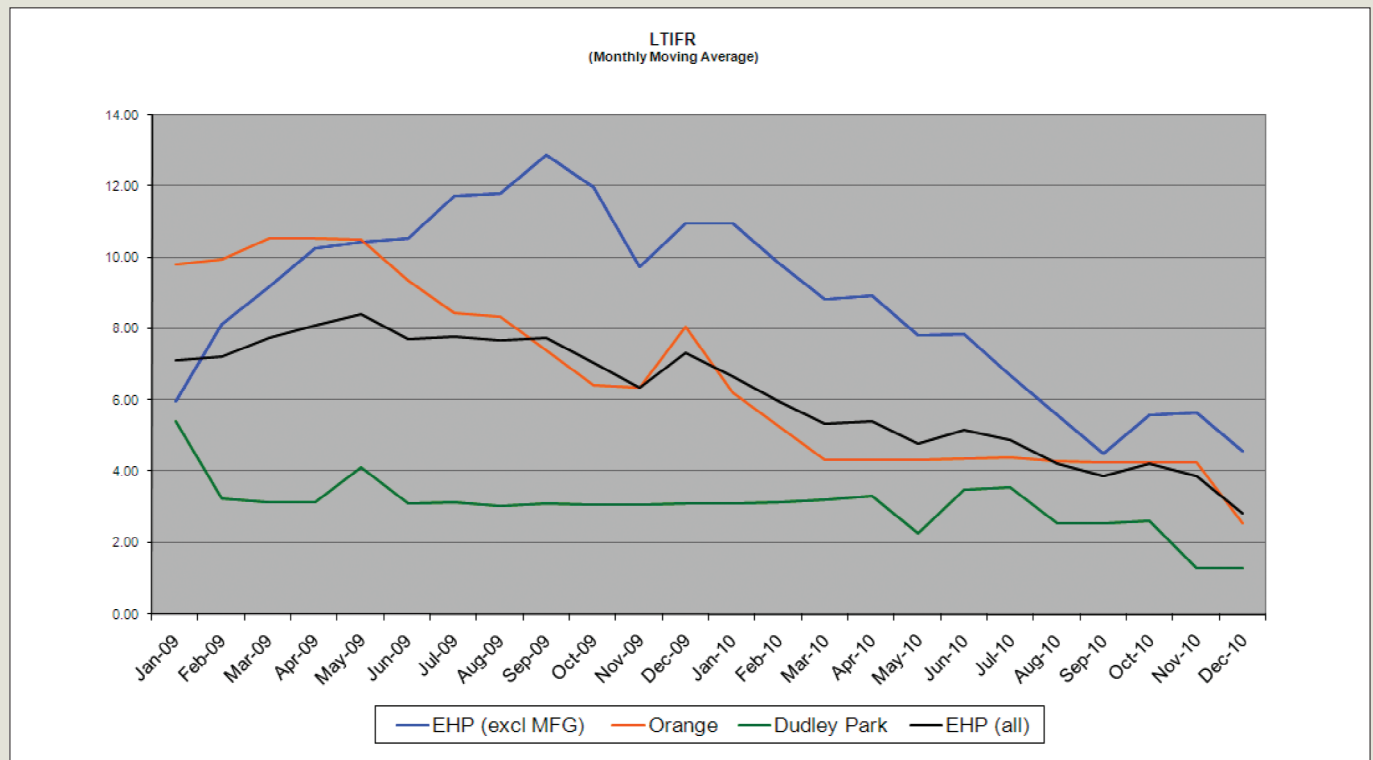
Electrolux Home Products (EHP) strives to continually improve our performance in respect of health and safety in all facets of our operations. We have continued to promote a culture of reporting of incidents to strategically manage injuries and continually improve processes to reduce the likelihood of recurrence. EHP has developed and implemented a three year Health and Safety Strategy to ensure measurable objectives are established and monitored. An integral part of this strategy is the review of injury statistics to examine the causal effects of incidents and identifying any developing trends, in addition to an increased focus on training.

Injury statistics and positive performance behaviours are reported on a monthly basis and are regularly reviewed by the senior management of EHP.

### Injury Statistics 2010

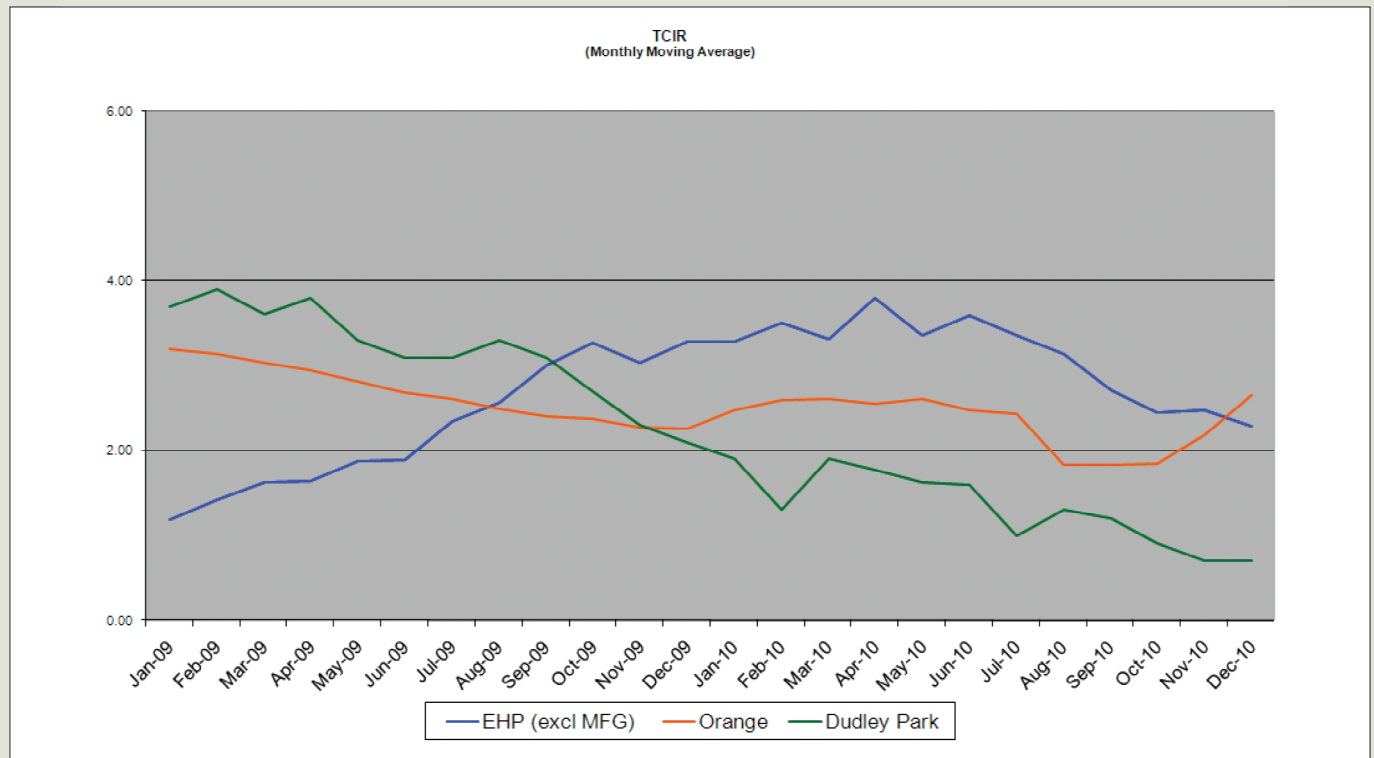
In 2010, EHP Australia recorded a total of 8 lost time injuries, which compares to 22 for 2009.

	LTIFR	TCIR	LTI (YTD)
Dudley Park	1.31	0.7	1
Orange	2.54	2.66	3
EHP (excluding manufacturing)	4.57	2.28	4
EHP (all) 2010	2.83 (average)	–	8
EHP (all) 2009	7.35 (average)	–	22



## TCIR

EHP has continued to adopt a shift towards a standardised approach in the reporting of injuries across the organisation. Lost Time Injury Frequency Rates (LTIFR) continue to be reported. The change in focus from the reporting of Lost Time Injuries to Recordable Case Injuries has emphasised the focus of EHP to continue to improve our systems with a view to reducing injuries and increasing reporting.



## Self Insurance

Both the South Australian and New South Wales operations of EHP maintain self insurance licenses for workers compensation in their respective states. The required internal auditing of the OHS Management Systems was completed in both states. In New South Wales, WorkCover confirmed an extension to the license of a further three years following a successful audit in 2009.