

2015



Report for EHP Australia

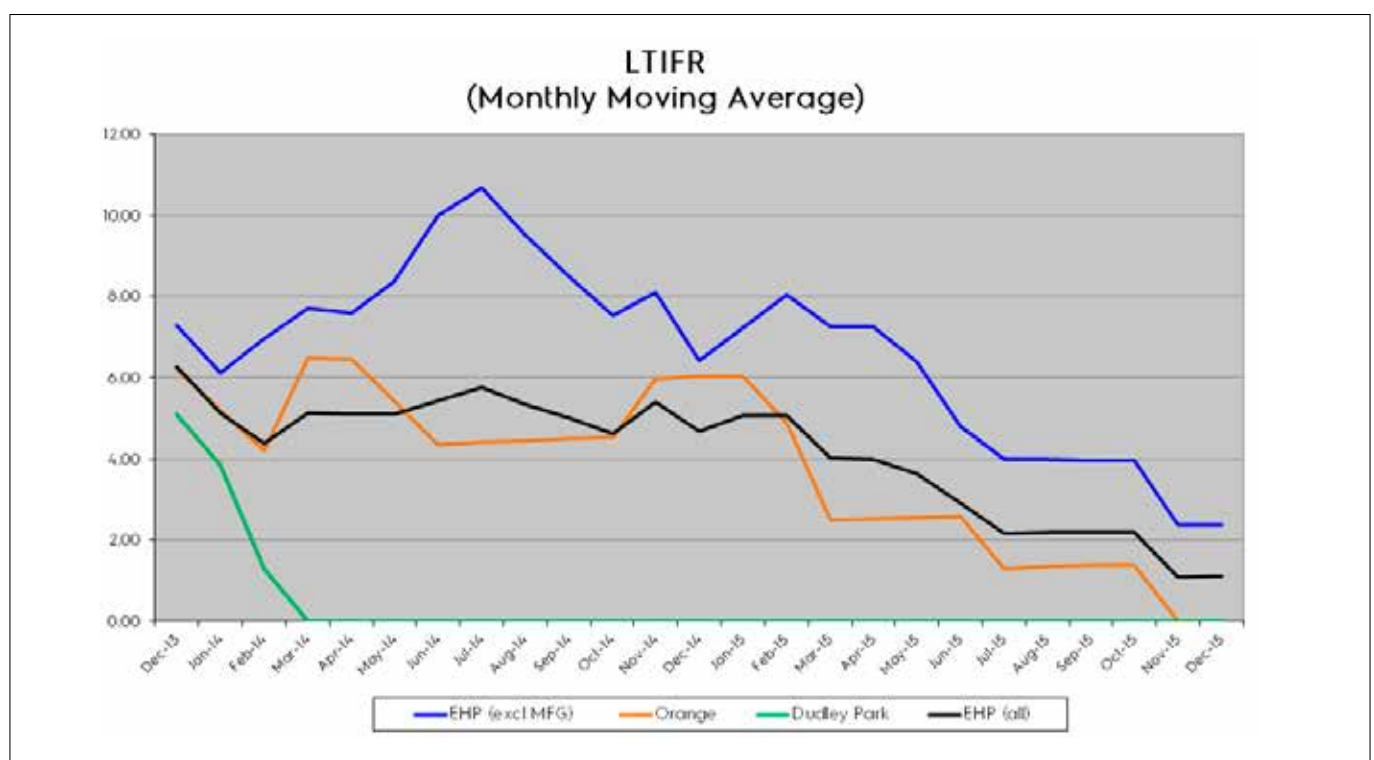
Electrolux seeks to continually improve the health and safety performance in our business to ensure our workers and others are not exposed to harm. By regular auditing of our systems and meaningful consultation with our workers, Electrolux is able to identify opportunities to improve performance.

On a monthly basis, positive safety performance indicators and injury statistics are reviewed by the senior management of Electrolux to ensure our objectives are being met. Indicators that impact positively on safety performance include actions such as workplace inspections, regular consultative forums and completion of emergency training exercises.

Injury Statistics 2015

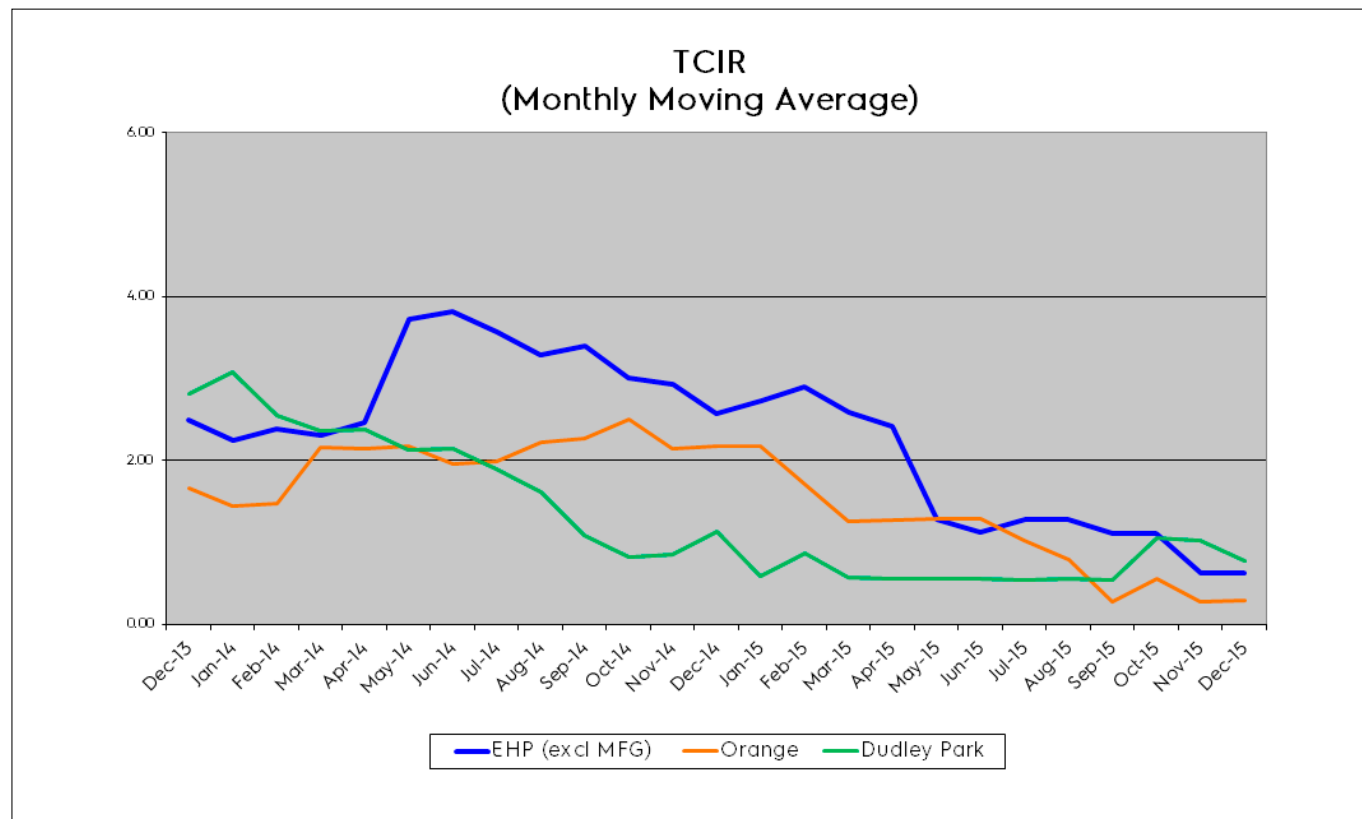
In 2015, Electrolux Australia and New Zealand recorded a significantly improved result in this area resulting in a reduction of ten lost time injuries compared to 2014.

	LTIFR †	TCIR	LTI (YTD)
Dudley Park – South Australia	0	.77	0
Orange – New South Wales	0	.29	0
EHP (excluding manufacturing)	2.37	.63	3
Electrolux (all) 2015	1.10	-	3
Electrolux (all) 2014	4.67	-	13



TCIR

An emphasis in reporting Recordable Case Injuries in preference to Lost Time Injuries has underpinned the focus of Electrolux to continue to improve our systems with a view to reducing injuries and increasing reporting. Lost Time Injury frequency rates (LTIFR) are reported and monitored, however they are one of several measures utilised to assist in measuring performance.

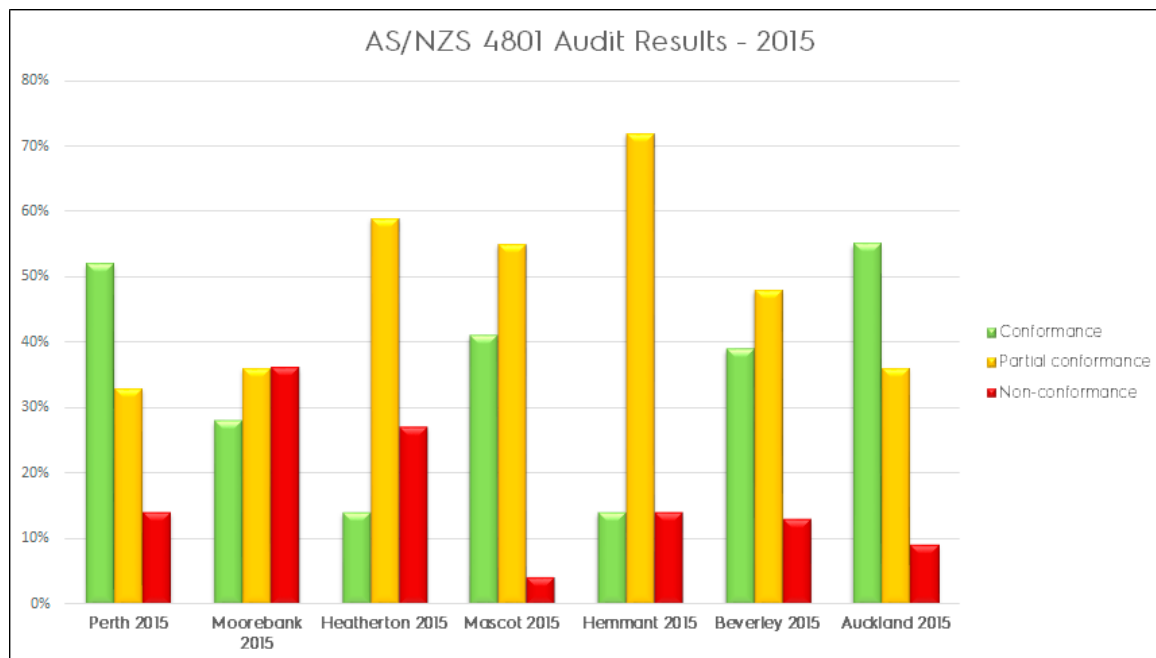


Self Insurance

Both the South Australian (SA) and New South Wales (NSW) operations of Electrolux continue to maintain self-insurance licenses for workers compensation in their respective States. The required internal auditing of the Health and Safety Management Systems (WHSMS) was completed in both States. NSW undertook a three-yearly verification audit by WorkCover in 2015 which determined the system was functioning to the level required to maintain self-insurance status.

AS/NZS 4801 Audits

All non-manufacturing sites in Australia and New Zealand undertook AS/NZS 4801 audits. The recognised management system standard AS/NZS 4801 was utilised as the metric. Results are monitored by the Safety Executive team to ensure completion of identified system improvements with sites undertaking audits on an annual basis to identify areas for improvement.



Non-manufacturing

The summary below incorporates details of items monitored within the non-manufacturing sector of EHP operations. This includes the sales, service, distribution and administrative functions of the business in Australia and New Zealand.

Safety Summary for December 2015	YTD Totals
Health & Safety Committee Meetings	69
<i>Plan</i>	69
Attendance at H&S Committee meetings	77%
Pallet racking Inspections	91
<i>Plan</i>	112
Workplace Inspections	238
<i>Plan</i>	175
Inductions completed	243
Reported hazards	31
Average time to report an incident (days) Target 2	< 1
LTI – 2015 Target < 6	3
LTIFR – 2015 Target < 4	2.37
TCIR – 2015 Target < 2.6	.63

Manufacturing - Orange

Safety Summary for December 2015	YTD Totals
Health & Safety Committee Meetings	12
<i>Plan</i>	12
Workplace Inspections	844
<i>Plan</i>	869
Risk assessments	151
<i>Plan</i>	180
Near miss reports	21
LTI – 2015 Target < 5	0
LTIFR – 2015 Target < .9	0
TCIR – 2015 Target < 1.5	.29

*Figure in parentheses is calculated using the formula at i. The manufacturing sector globally calculate Lost Time Injury Frequency rate using the American standard (OSHA), which multiplies the number of LTI's / number of hours worked by 200,000.

ⁱ LTIFR is calculated as (number of LTI's / number of hours worked)*1,000,000

TCIR is an EHP calculation Number of occurrences on injury or disease during period/ No Employees*200,000.