

2015 Report for Electrolux ANZ

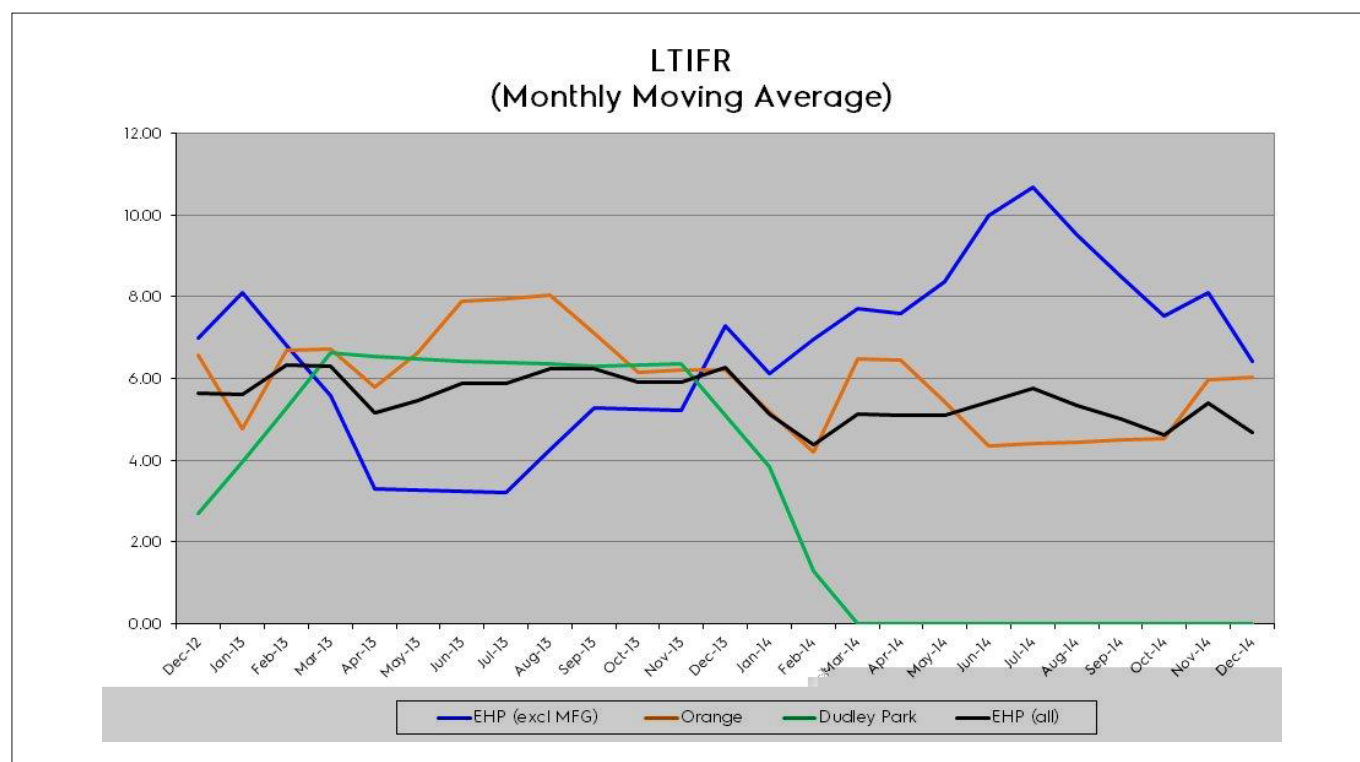
Electrolux is committed to providing our employees and others who come into contact with our appliances continual improvement in our health and safety performance. Electrolux regularly monitors the performance of our safety management systems to assess the effectiveness of implementation and to identify opportunities to improve performance.

Positive performance behaviours and injury statistics are reported on a monthly basis and are reviewed by the senior management of Electrolux. Indicators that positively impact on safety performance include preventative actions such as workplace inspections, training courses offered and health and safety committee meetings are continually reviewed.

Injury Statistics 2014

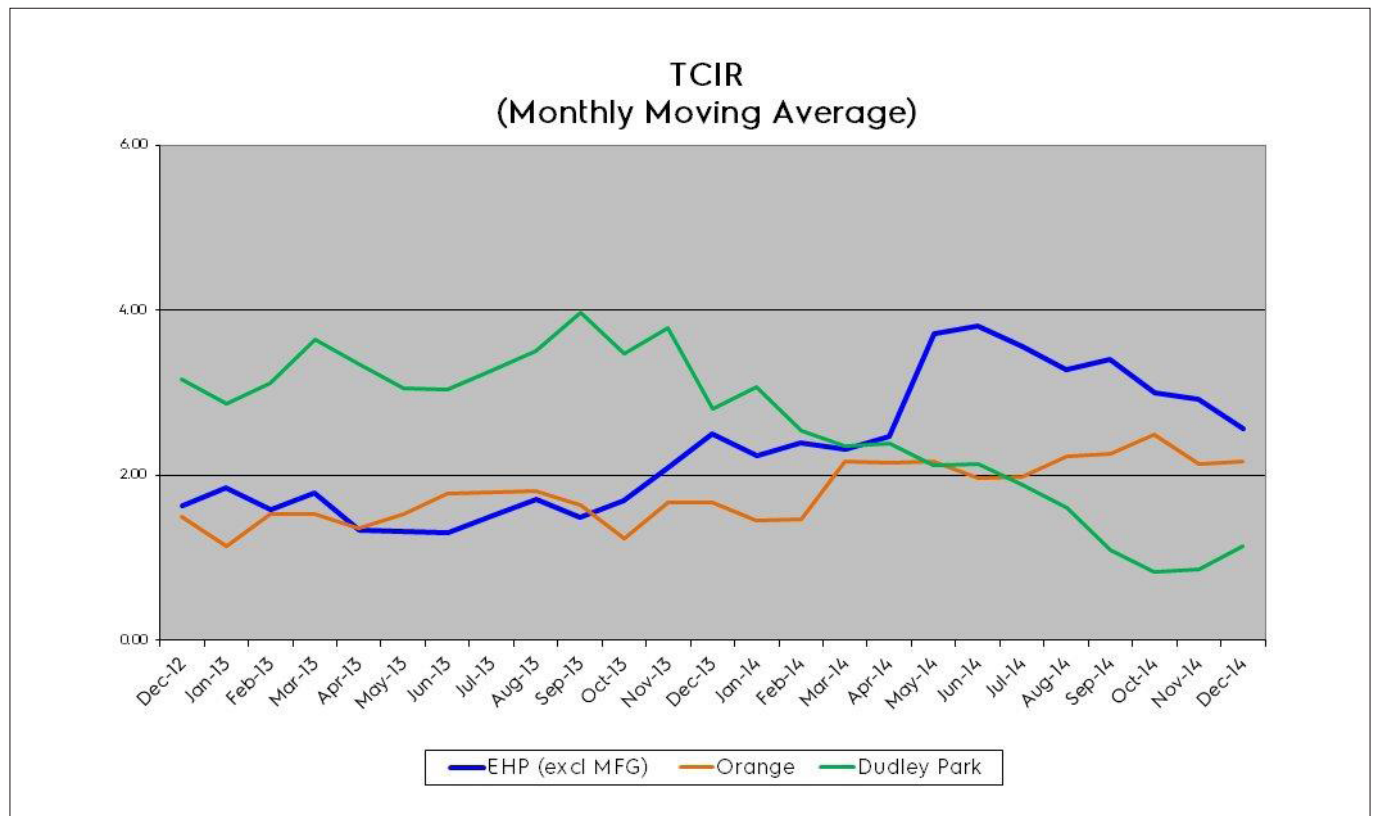
In 2014, Electrolux Australia and New Zealand recorded a total of 13 lost time injuries, which compares to 17 for 2013.

	LTIFR ¹	TCIR	LTI (YTD)
Dudley Park – South Australia	0	1.13	0
Orange – New South Wales	6.04	2.17	5
EHP (excluding manufacturing)	6.41	2.56	8
EHP (all) 2014	4.67	-	13
EHP (all) 2013	6.32	-	17



TCIR

A standardised approach in the reporting of injuries across Electrolux has been adopted. Lost Time Injury frequency rates (LTIFR) are reported, however they are not the sole focus. An emphasis in reporting Recordable Case Injuries in preference to Lost Time Injuries has underpinned the focus of Electrolux to continue to improve our systems with a view to reducing injuries and increasing reporting.

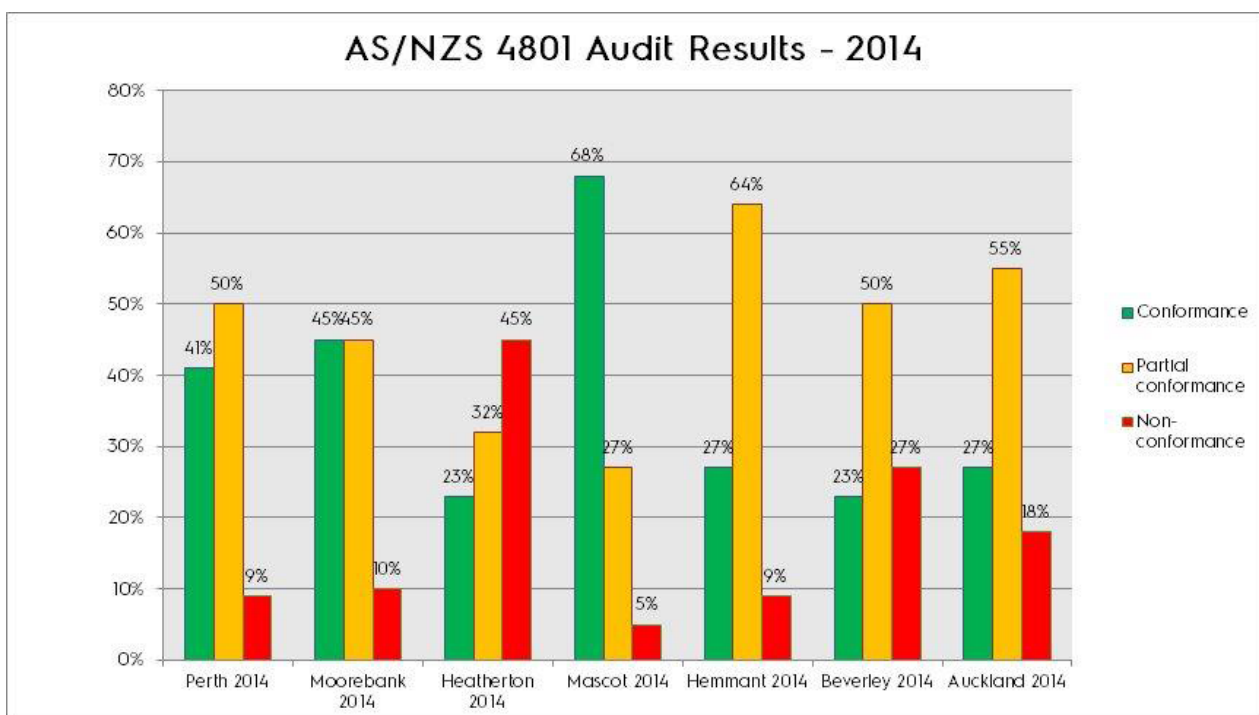


Self Insurance

Both the South Australian (SA) and New South Wales (NSW) operations of Electrolux continue to maintain self-insurance licenses for workers compensation in their respective States. The required internal auditing of the Health and Safety Management Systems (WHSMS) was completed in both States. NSW will partake in a three-yearly verification audit by WorkCover in 2015.

AS/NZS 4801 Audits

EHP undertook safety management system audits at all non-manufacturing sites in Australia and New Zealand. The recognised management system standard AS/NZS 4801 was utilised as the metric. Results are monitored by the Safety Executive team to ensure completion of identified system improvements with sites undertaking audits on an annual basis to identify areas for improvement. The 2013 results served to establish a baseline for all sites.



Non-manufacturing

The summary below incorporates details of items monitored within the non-manufacturing sector of Electrolux operations. This includes the sales, service, distribution and administrative functions of Electrolux in Australia and New Zealand.

Safety Summary for December 2014	YTD Totals
Health & Safety Committee Meetings	64
Plan	66
Attendance at H&S Committee meetings	79%
Pallet racking Inspections	120
Plan	93
Workplace Inspections	212
Plan	146
New inductions completed	227
Reported hazards	53
Average time to report an incident (days) Target 2	< 1
LTI – 2014 Target < 6	8
LTIFR – 2014 Target < 4	6.92
TCIR – 2014 Target < 2.6	2.77

Manufacturing - Orange

Safety Summary for December 2014	YTD Totals
Health & Safety Committee Meetings	12
Plan	12
Workplace Inspections	846
Plan	846
Risk assessments	331
Plan	180
Near miss reports	34
LTI – 2014 Target < 6	8
LTIFR – 2014 Target < 4	6.92
TCIR – 2014 Target < 2.6	2.77

*Figure in parentheses is calculated using the formula at i. The manufacturing sector globally calculate Lost Time Injury Frequency rate using the American standard (OSHA), which multiplies the number of LTI's / number of hours worked by 200,000.

ⁱ LTIFR is calculated as (number of LTI's / number of hours worked) *1,000,000 TCIR is an EHP calculation Number of occurrences on injury or disease during period/ No Employees*200,000.