

2013 Report for EHP Australia

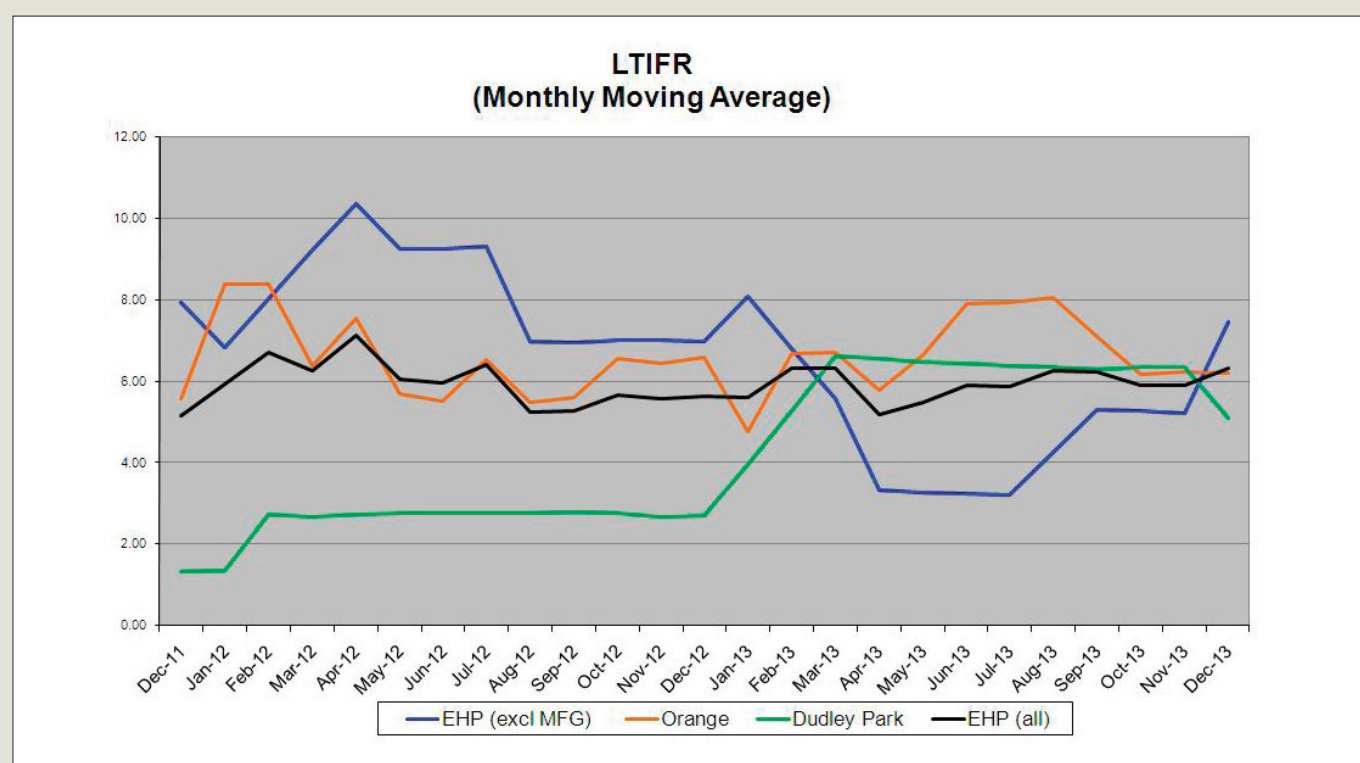
Electrolux Home Products (EHP) recognises the intrinsic value to our employees and all of our stakeholders in working to continually improve our health and safety performance. Integral to improving performance is to ensure timely reporting and analysis of progress against objectives and of injury statistics. EHP has an audit schedule to assess the implementation of our systems and facilitates regular managerial review of our safety performance overall.

Injury statistics and positive performance behaviours are reported on a monthly basis and are regularly reviewed by the senior management of EHP. Performance indicators that positively impact on outcome performance such as workplace inspections, training courses offered and health and safety committee meetings are focussed on and continually reviewed.

Injury Statistics 2013

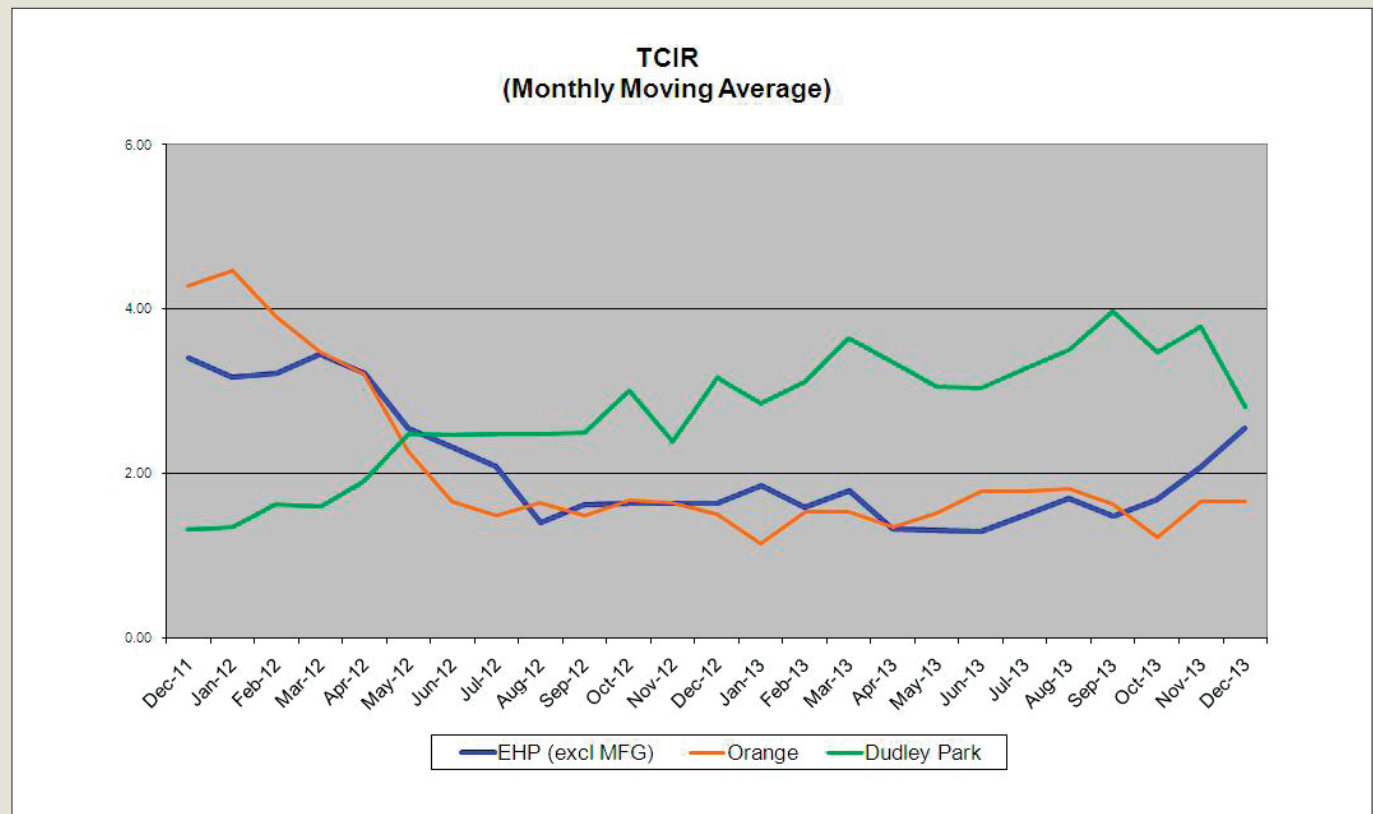
In 2013, EHP Australia recorded a total of 17 lost time injuries, which compares to 15 for 2012.

	LTIFR †	TCIR	LTI (YTD)
Dudley Park – South Australia	5.10	2.81	4
Orange – New South Wales	6.21	1.66	6
EHP (excluding manufacturing)	7.46	2.56	7
EHP (all) 2013	6.32 (average)	-	17
EHP (all) 2012	5.63 (average)	-	15



TCIR

EHP has maintained a standardised approach in the reporting of injuries across the organisation. An emphasis in reporting Recordable Case Injuries in preference to Lost Time Injuries is an area of focus by EHP when reviewing our systems with a view to reducing injuries and increasing reporting.

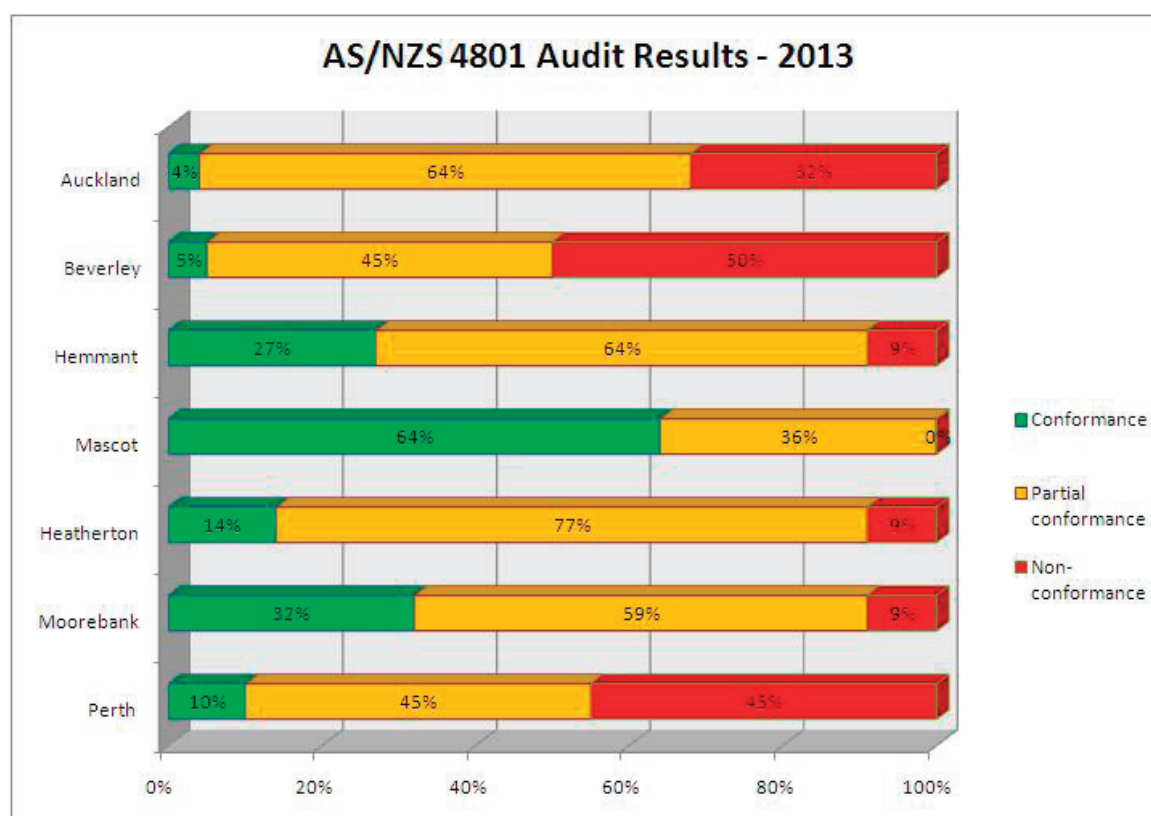


Self Insurance

Both the South Australian (SA) and New South Wales (NSW) operations of EHP maintain self insurance licenses for workers compensation in their respective States. The required internal auditing of the Health and Safety Management Systems (WHSMS) was completed in both States. The EHP South Australian operations and manufacturing sectors undertook mandatory auditing by the State regulator, for which the safety management and injury management systems were deemed to comply.

AS/NZS 4801 Audits

EHP undertook safety management system audits at all non-manufacturing sites in Australia and New Zealand. The recognised management system standard AS/NZS 4801 was utilised as the metric. Results are monitored by the Safety Executive team to ensure completion of identified system improvements with sites undertaking audits on an annual basis to identify areas for improvement. The 2013 audits served to establish a baseline for all sites.



**Non-manufacturing**

The summary below incorporates details of items monitored within the non-manufacturing sector of EHP operations. This includes the sales, service, distribution and administrative functions of the business in Australia and New Zealand.

Safety Summary for December 2013	YTD Totals
Health & Safety Committee Meetings	62
<i>Plan</i>	62
Attendance at H&S Committee meetings	75%
Pallet racking Inspections	90
<i>Plan</i>	87
Workplace Inspections	195
<i>Plan</i>	156
New inductions completed	259
Reported hazards	53
Average time to report an incident (days) Target 2	.72
LTI – 2013 Target < 6	7
LTIFR – 2013 Target < 4	7.46
TCIR – 2013 Target < 2.6	2.56

Manufacturing - Orange

Safety Summary for December 2013	YTD Totals
HS Committee Meetings	12
<i>Plan</i>	12
Workplace Inspections	847
<i>Plan</i>	807
Risk assessments	423
<i>Plan</i>	180
Near miss reports	36
LTI – 2013	6
LTIFR – 2013 Target < .8 (<4.00*)	1.04 (6.21*)
TCIR – 2013 Target < 1.00	1.66

*Figure in parentheses is calculated using the formula at i. The manufacturing sector globally calculate Lost Time Injury Frequency rate using the American standard (OSHA), which multiplies the number of LTI's / number of hours worked by 200,000.

ⁱ LTIFR is calculated as (number of LTI's / number of hours worked) * 1,000,000. TCIR is an EHP calculation Number of occurrences on injury or disease during period/ No Employees* 200,000.